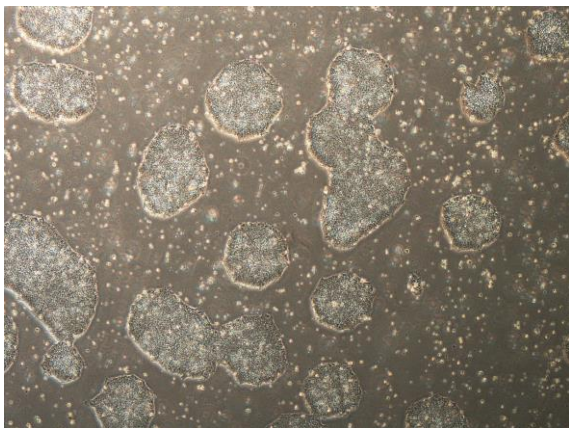
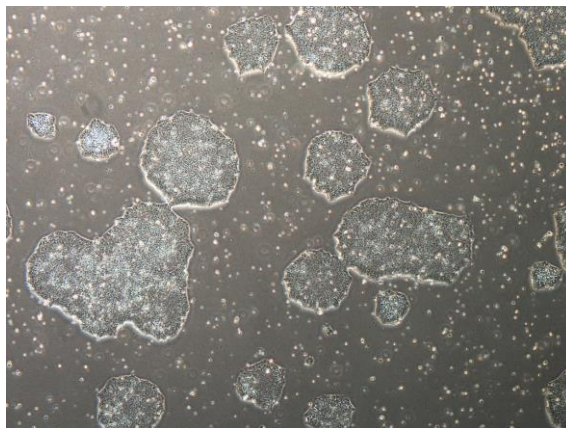


【 CiRA-j-1621 】 Morphology of iPSC colonies

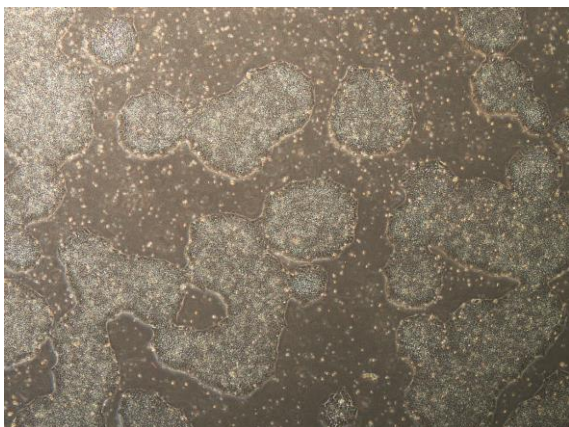
CiRA-j-1621-A: passage-3



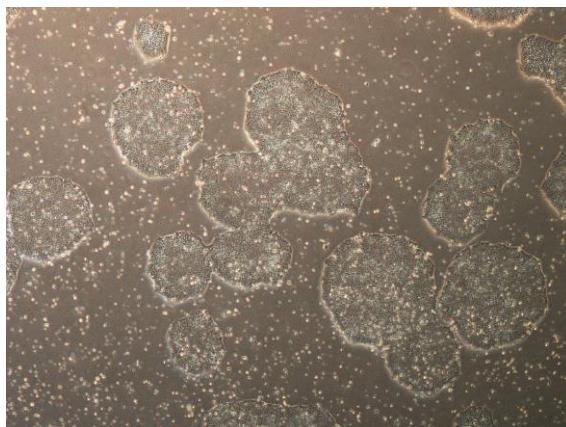
CiRA-j-1621-B: passage-3



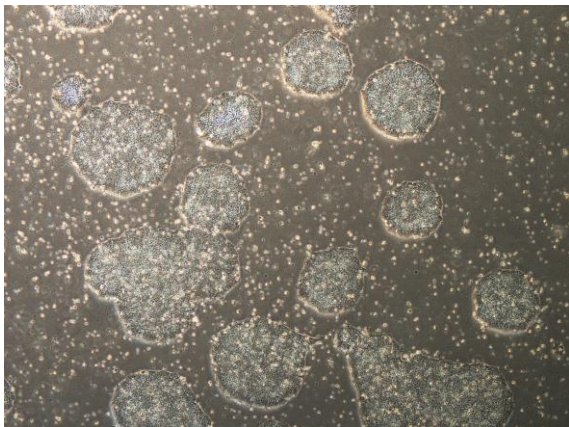
CiRA-j-1621-C: passage-3



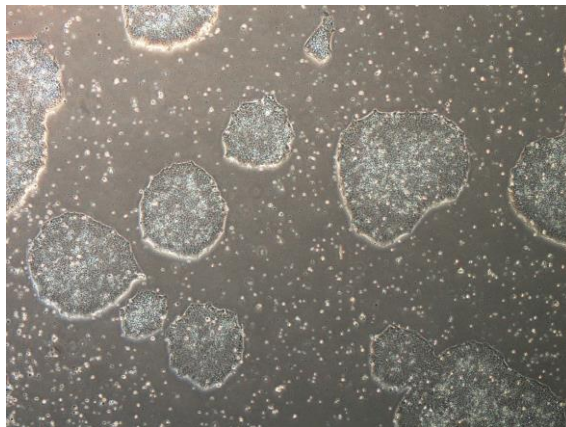
CiRA-j-1621-D: passage-3



CiRA-j-1621-E: passage-3



CiRA-j-1621-F: passage-3



(All images were captured at 4x magnification)